



Technical Specifications
Updated: 5/2023

MISSION STATEMENT



Our Mission: Mayo Performing Arts Center, a 501(c) (3) nonprofit performing arts organization, presents a wide range of programs that entertain, enrich and educate the diverse population of the region and enhance the economic vitality of Northern New Jersey.

MPAC was selected as 2016 Outstanding Historic Theatre by the League of Historic American Theatres. MPAC is ranked in the top 50 for mid-sized performing arts centers by Pollstar Magazine.

Highlights from the past season include:

Concerts

- ☐ We had over **170 ticketed performances and 323 events** on our stage, including headliners, emerging artists, school events, art gallery exhibitions, classes and more.
- ☐ Over **244,000 people** were served by MPAC programs, including ticketed events, outreach activities and education programs.
- ☐ The Nutcracker drew over **15,000 people into Morristown** across 14 performances during the holiday season.
- ☐ MPAC drew audiences from all 21 NJ counties, as well as New York, Pennsylvania and other surrounding states.
- ☐ Our **economic impact** on the region was over \$15 million. (Americans for the Arts Economic Prosperity IV Calculator)

Education

- ☐ Over **40,000 children and families** are served by MPAC events annually.
- ☐ MPAC's annual spring youth productions, such as Grease, Shrek the Musical and West Side Story, regularly draw over 4,000 patrons
- ☐ MPAC provides nine classes for children on the autism spectrum and with other special needs through the methodology of The Miracle Project
- ☐ The Performing Arts Company performed at over 30 local fundraising events
- ☐ Over **\$49,000 was provided in PAS and PAC scholarships** to local students in need
- ☐ MPAC serves as Region 4 host to the statewide Poetry Out Loud competition

Community

- ☐ MPAC's **Arts in the Community** initiative regularly presents free events, including summer movies, outdoor lunch concerts, evening performances adjacent to the Theatre and other special events throughout the year. This past season over 25 free events were held.
- ☐ **Donated of tickets to 950** area organizations, schools and non-profits for their fundraising efforts
- ☐ **Donated approximately 24,000 tickets** to area non-profits to provide arts experiences that their constituents may not have been able to otherwise afford.

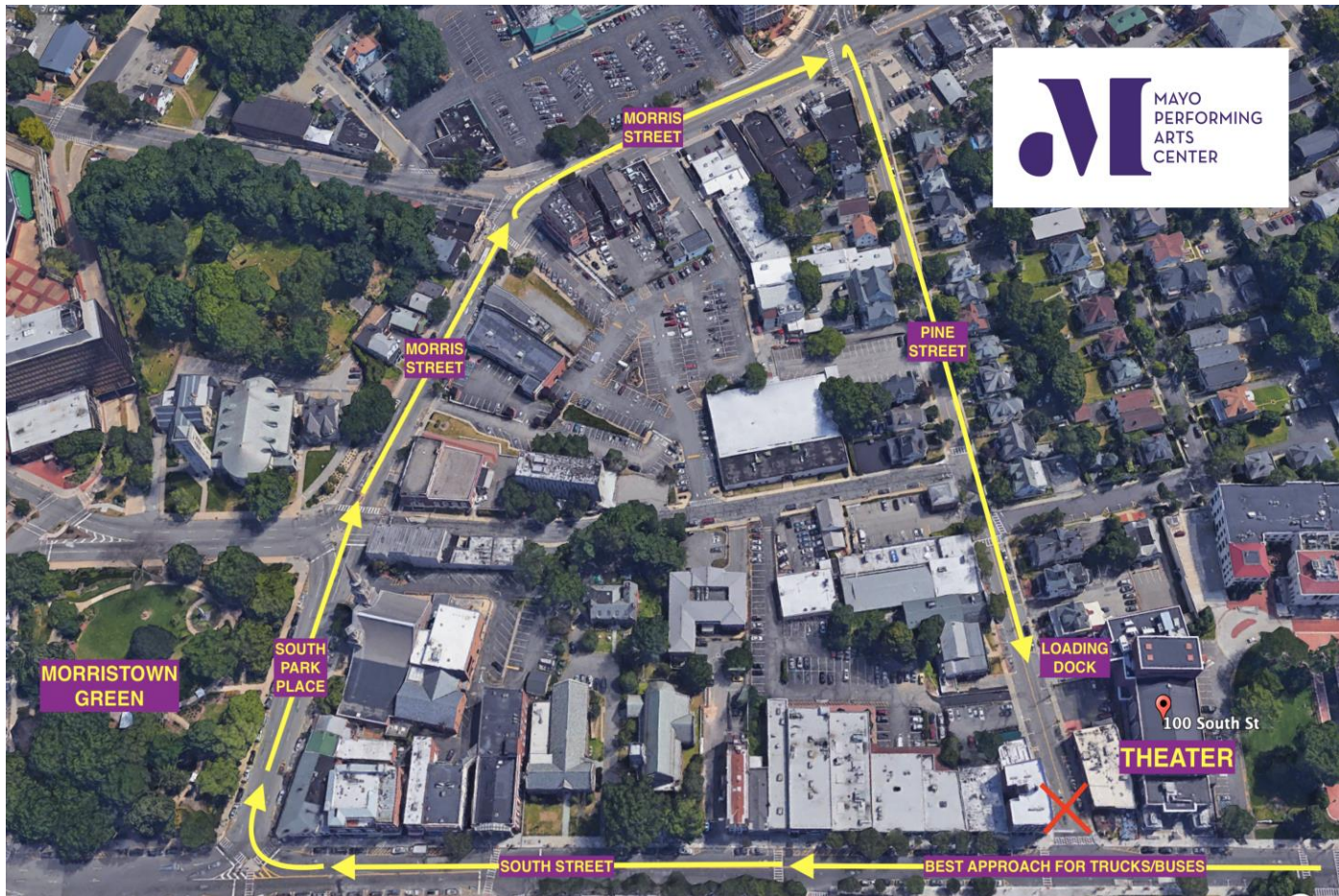
TABLE OF CONTENTS

<u>TOPIC</u>	<u>PAGE</u>
Cover Sheet	1
Mission Statement	2
Table of Contents	3-4
General Information	5
<i>Theater/Dock Map</i>	5
<i>Addresses/Phone numbers</i>	5
<i>Shipping/Mail Information</i>	5
House Staff Contacts	6
Important Stage Dimensions	6
Stage Construction	6
Audience Access from Stage	6
Loading Dock / Freight Elevator	7
Dressing Rooms	7
Catering	8
Merchandise Sales	8
Recording Policies	8
Production Runner Policies	8
House Audio Specifications	9
<i>Power</i>	9
<i>FOH Audio Console</i>	9
<i>Drive Rack</i>	9
<i>Source Rack</i>	9
<i>Wireless Microphone Stock</i>	9
<i>DI Box Stock</i>	9
<i>Wired Microphone Stock</i>	9
<i>Piano Microphone/Pick Up Stock</i>	10
<i>P.A. System</i>	10
<i>Monitors</i>	10
<i>Wireless IEM Systems</i>	10
<i>Cabling</i>	10
<i>Communications/Backstage Paging</i>	10
<i>Assisted Listening</i>	10
House Lighting Specifications	11
<i>Power</i>	11
<i>Consoles</i>	11
<i>Dimming</i>	11
<i>Box Truss</i>	11
<i>FOH Lighting</i>	11
<i>On-Stage Overhead Electrics</i>	11

TABLE OF CONTENTS

<u>TOPIC</u>	<u>PAGE</u>
<i>Moving Lights</i>	12
<i>Follow spots</i>	12
<i>Dance Booms</i>	12
<i>Atmospheric Effects</i>	12
<i>House Lights</i>	12
House Video Projection Equipment	12
Stage Deck Risers	12
Marley Dance Floor	13
Pipe and Drape	13
Orchestral Equipment	13
<i>Pianos</i>	13
<i>Chairs/Stools/Music Stands</i>	13
<i>Conductor's Podium</i>	13
<i>Orchestra Shell</i>	13
<i>Stage Thrust and Extensions</i>	13
Line Set Schedule	14
Box Truss Lighting Plot	15
Overhead Stage Lighting Plot	16
Dance Booms Lighting Plot	17
FOH Lighting Plot	18

GENERAL INFORMATION



Main Entrance / Box Office

100 South Street

Morristown, NJ 07960

Main Phone: (973) 539-0345

Box Office Phone: (973) 539-8008

(Use this address for MAIL & FEDEX/UPS)

Loading Dock / Artist's Entrance

9 Pine Street

Morristown, NJ 07960

**(Use this address for FREIGHT deliveries &
CAR SERVICE DROP OFF & PICKUP)**

HOUSE STAFF CONTACTS

Chris Ball	Production Director <i>Primary advance contact for all TECHNICAL NEEDS.</i>	cball@mayoarts.org	(973) 753-0354
Andy West	Production Manager <i>Contact for all DAY OF SHOW PRODUCTION needs.</i>	awest@mayoarts.org	(973) 753-0366
Meri Larsen	Production Manager <i>Contact for all DAY OF SHOW PRODUCTION needs.</i>	mlarsen@mayoarts.org	(973) 753-0350
Esther Neibart	Catering/Hospitality Manager <i>Contact for all Catering, Hospitality and Dressing Room Needs</i>	eneibart@mayoarts.org	(862) 324-5231
Jim Sargent	LD/House Electrician <i>Contact for all LIGHTING/ELECTRICAL inquiries.</i>	jim.sargent36@gmail.com	(732) 310-1599
Dave Cifelli	A1/Sound Engineer <i>Contact for all AUDIO inquiries.</i>	dave.cifelli26@gmail.com	(201) 978-0756
Erin Pach	Front of House Director <i>Contact for all MERCHANDISE & LOBBY inquiries.</i>	epach@mayoarts.org	(973) 539-0345 x6509



Labor for all events at the Mayo Performing Arts Center is represented by

IATSE Local 632.



IMPORTANT STAGE DIMENSIONS

Proscenium Opening	36'-0" wide x 25'-0" high
Plaster Line to Back Wall	40'-0"
Downstage Lip to Back Wall	44'-0"
SL Fly Rail to SR Wall Width	72'-0"
Center Line to SL Fly Rail	33'-0"
Center Line to SR Wall	36'-0"
Grid Height	61'-0"
High Steel	68'-6"
Batten Length	44'-0"
Clearance to SL Midrail Bridge	21'-10"
Clearance to SR Jump Bridge	33'-0"

STAGE CONSTRUCTION

Fully sprung, basket weave tongue and groove floor with dark wood finish.

DRILLING, SCREWING OR BOLTING INTO THE STAGE DECK IS PROHIBITED.

AUDIENCE ACCESS FROM STAGE

2 sets of stairs from the stage to the house are available. They are located downstage left and downstage right. Both sets of stairs have removable handrails. Stairs are **NOT PERMANENT** and can be deployed upon request.

LOADING DOCK

The loading dock has 2 roll-up bay doors. The driveway can accommodate 2 vehicles (bus/semi) side by side (or multiple cars/vans). The doors are 48" from the ground and measure 8'-0" x 8'-0".

Venue has a 14'-0" ramp for loading in bus trailers to dock height.

There is an overhang with a low clearance of 14'-8".

IDLING OF ENGINES IS NOT PERMITTED while in the loading dock. Generators are permitted.

Shore power is available as well as standard 20 amp outlets and water supply.

STACKING & UNSTACKING

MPAC has "helper" chain hoist motors on the loading stock and on stage both stage left and stage right.

There is also a battery powered "Big Joe" forklift stacker that can lift 2000lbs.

FREIGHT ELEVATOR

Elevator Door opening is **6'w x 8'h**.

Elevator interior box dimensions are **11'-1"d x 9'-9"w**. The weight capacity is **5700 lbs**.

Elevator travels between Loading Dock level and Stage level **ONLY**.

DRESSING ROOMS

There are a total of 6 dressing rooms available. Pictures of all dressing rooms are available upon request.

Dressing Room #1	Located on stage level upstage left. Room handles 1-3 people and has a private rest room with shower.
-------------------------	---

Dressing Room #2	Located on stage level upstage left. Room handles 1-3 people and has a private rest room with shower.
-------------------------	---

Dressing Room #3	Located on the loading dock level one floor below the stage. Room handles 15-20 people and shares access to backstage common area rest rooms with dressing rooms 4-6. 3 showers total in this area.
-------------------------	---

Dressing Room #4	Located on the loading dock level one floor below the stage. Room handles 10-12 people and shares access to backstage common area rest rooms with dressing rooms 3, 5 & 6.
-------------------------	--

Dressing Room #5	Located on the loading dock level one floor below the stage. Room handles 4-5 people and shares access to backstage common area rest rooms with dressing rooms 3, 4 & 6.
-------------------------	--

Dressing Room #6	Located on the loading dock level one floor below the stage. Room handles 3-4 people and shares access to backstage common area rest rooms with dressing rooms 3-5.
-------------------------	---

All dressing rooms are hard wired for internet. Wi-Fi is also available throughout the venue.

All dressing rooms have live audio and video feeds of the show.

CATERING

The catering space is located one level up from stage level. Catering space is buffet style with rectangular tables and chairs and seats approximately 40-50 people.

Catering has live audio and video feeds of the show.

Bathrooms are available on this level (NO showers).

Photos of the catering space are available upon request.

MERCHANDISE SALES

Built-In Merchandise counter with wall mounted T-shirt racks, telephone & internet connection

Counter storage and room for 2-3 sellers.

RECORDING POLICIES

MPAC labor is represented by IATSE Local 632 Stage Hands Union. **Any recording done on the premises of MPAC is subject to additional labor fees imposed by the Stage Hand's Union. ALL RECORDINGS** are subject to the recording fees including audio, video & and internet. The **ONLY** recordings exempt from fees are those for **ARCHIVAL** purposes. For the purposes of these fees, **ARCHIVAL** is defined as the following:

Archival Audio

2 channel recording (left and right) taken from the FOH console position. More than 2 track recordings will require fees to be imposed.

Archival Video

1 stationary camera on a tripod from a mutually agreed upon position. This camera may not be carried around or shoulder mounted. Movements of camera or the addition of multiple cameras will require fees to be imposed. This **INCLUDES** iPhones and small hand-held electronics on gimbals or other such mount.

The imposing of fees is decided on solely by the Steward (Crew Chief) representing the Union for that event in coordination and consultation with House Production Management.

PRODUCTION RUNNER POLICIES

At such time that it is determined during the advance that a runner is needed for the production, MPAC enforces the following policies on that runner. **ANY DEVIATION** from these policies must be advanced and sanctioned by MPAC's Production Manager.

- We guarantee that runners will be at least 21 years of age, clean, sober and responsible persons with a clean 4-door vehicle. They will possess a valid driver's license and local area knowledge and be able to complete purchase for the visiting artist.

- Runners are to be used for **LOCAL** runs only.

- **Runners are not responsible for airport transportation.** If requesting airport ground transportation, it can be arranged through the production office at the Tour's expense, unless contracted by the Act's agency.

- Runners are subject to all crew calls and unless previously released, are cut at the completion of load out.

NO EXCEPTIONS. Please plan all end of night runs accordingly.

HOUSE AUDIO SPECIFICATIONS

POWER

200 Amp Camlok ready (Ground & Neutral legs reversed). Located Downstage Right.
Ample stage power is available. Multiple quad boxes and power drops available SL & SR.

****HOUSE MAKES EVERY EFFORT TO ENFORCE AN APPROPRIATE DB LIMIT FOR YOUR SHOW IN OUR SPACE****

FOH AUDIO CONSOLE

1 - AVID Profile VENUE Mix Rack Digital Mixing Console w/ current software.
Console contains 3 DSP mix engines and the WAVES effects suite.

DRIVE RACK

1 - Meyer Galileo 616 Processor
1 - Apogee Big Ben Word Clock
1 - DBX 266XS Compressor/Gate
1 - Apogee Mix Switch

SOURCE RACK

1 - Tascam 901SL CD Recorder
1 - Denon DN4000 Dual CD Player
1 - Sony MDS-E12 MiniDisk
1 - Apple iMac running: LA Network Manager, iTunes, Spotify, Qlab

WIRELESS MICROPHONE STOCK

5 - Shure UR4D+ Dual Wireless Receiver (10 chs. total)
8 - Shure SM-58 Handheld Microphone
2 - Shure Beta 58 Handheld Microphone
4 - Shure KSM9 Capsule
10 - Shure UR-1 Wireless Belt packs
10 - Countryman B3 Lavalier Microphone
11 - Countryman E6 Ear set Microphone

DI BOX STOCK

9 - Countryman Type 85 DI Box
6 - Radial Pro D2 Stereo DI box
2 - Radial Pro D1 DI Box
1 - Whirlwind Direct 4
4 - Radial J48 DI Box
2 - Whirlwind PCDI 2 channel A/V DI Box
1 - Whirlwind PCDIQ 4 Channel A/V DI Box

WIRED MICROPHONE STOCK

6	Shure	SM-81	2	Shure	MX-418
5	Shure	Beta 57	4	Sennheiser	MD-421
8	Shure	Beta 58	1	Sennheiser	845-S
7	Shure	SM-57	5	Sennheiser	E604
7	Shure	SM-58	4	Sennheiser	E906
1	Shure	VP-88	4	AKG	414
2	Shure	Beta 52	2	AKG	451
1	Shure	Beta 91	2	AKG	C747
2	Shure	KSM-109	1	DPA	DAD6001
1	Shure	Beta 56	1	DPA	4099
2	Shure	KSM-27	4	Crown	PCC-160
5	Shure	Beta 98	5	Neumann	KMS-105
4	Shure	MX-202	1	Electro Voice	RE-20
2	Shure	SM-89	1	Rode	NT-4
2	Shure	827	1	Audio Technica	U857
1	Shure	SM-58S	1	Earthworks	M-30
2	AMT	P800BMW	1	Audix	D6

PIANO MICROPHONE/PICK UP STOCK

1 - Earthworks PM-40 PianoMic
1 - AMT M-40

P.A. SYSTEM

L-Acoustics KARA Line Array	20 Boxes Flown (10 per side)
L-Acoustics SB18 Flown Subwoofer (1x18" Each)	6 Boxes Flown (3 per side)
L-Acoustics X8 Front Fill Speaker	Lip of Stage Front Fill (4 total)
L-Acoustics X12 Near Fill Speaker	Lip of Stage Near Fill (1 per side)
L-Acoustics X8 Under Balcony Fill Speaker	Under Balcony Fill (6 total)
L-Acoustics KS28 Floor Subwoofer (2x18" Each)	Ground Under Front of Stage (2 per side)
L-Acoustics LA12X Amplifiers	

MONITORS

Yamaha PM-5D RH Digital Mixing Console Inserted I/O cards: MY8AT (8 Channel ADAT), MY8ADDA96 (8 Channel AD/DA @96), MY8AES96S (8 Channel AES with SRC).
4 - Meyer UM-1P Stage Monitors
14 - L-Acoustics X12 Monitor Wedges
4 - L-Acoustics LA4X Amplifiers
2 - Meyer UPA-1P Side Fills (mobile)
1 - L-Acoustics SB-18 Drum Sub

WIRED & WIRELESS IEM SYSTEMS

8 - Channels of Sennheiser ew300 G3 IEM,
2 - Shure P9HW Hard Wired In Ear Monitors

CABLING

Whirlwind 48 Channel 10 return W-4 with 2 iso-splits FOH Snake 8 - Whirlwind W-1 Subsnakes with detachable 12 channel heads 2 - 75', 4 - 50', 2 - 25' and 8-12 channel heads. Many lengths of 3 Pin XLR cable in assorted sizes

COMMUNICATIONS / BACKSTAGE PAGING / ASSISTED LISTENING

Clear Com available SR, SL, Fly Rail, Stage Managers Desk, FOH position and Spot Booth. Stage Manager stand (DSL) has the ability to page all dressing rooms and catering space. 8 - HME Wireless Headsets 1 - Sennheiser Tour Guide 2020-D assisted listening system
--

HOUSE LIGHTING SPECIFICATION

POWER

400 Amp Camlok ready (ground & neutral legs reversed). Located Downstage Right.

CONSOLES

Avolites Arena Console with Tiger Touch Wing running current software.
ETC ION XE20 Console running current software.

DIMMING

204 - ETC Sensor dimmers for overhead electrics and distro throughout the theater.
96 - NSI Quad Touring rack for downstage box truss only.

BOX TRUSS LIGHTING

35'-0" X 15'-0" box constructed of 20.5" box truss. Box trims @ 29'-0".
The box truss is permanently rigged (instruments included). No adding, striking or relocating of instruments allowed. No additional rigging to the box truss is allowed. Neither the decorative valence or the heat shield curtain on the box truss are to be removed. Additional rigging points are available for tour equipment.

BOX TRUSS FIXTURE COUNT

DS BOX TRUSS

6 - ETC Source Four Par MFL (575w)
19 - ETC Source Four 26° Leko (575w)
10 - Chauvet Rogue R2X Wash Moving Light

US BOX TRUSS

6 - ETC Source Four par WFL (575w)
for orchestra fill light.

SL BOX TRUSS

6 - ETC Source Four 36° Leko (575w)
3 - ETC Source Four Par MFL (575w)
1 - Martin Quantum Profile Moving Light

SR BOX TRUSS

6 - ETC Source Four 36° Leko (575w)
3 - ETC Source Four Par MFL (575w)
1 - Martin Quantum Profile Moving Light

FOH LIGHTING

75'-0" Throw from these positions to DSC stage lip.

BALCONY BOOM HOUSE RIGHT

6 - ETC Source Four 14° Leko (575w)

BALCONY BOOM HOUSE LEFT

6 - ETC Source Four 14° Leko (575w)

BALCONY RAIL

10 - ETC Lustr2 LED Leko

ON-STAGE OVERHEAD ELECTRICS LIGHTING

There are 5 on-stage electrics. Electrics 1-4 are identical in fixture content and layout. Electric 5 is a CYC light pipe. Please refer to the fly schedule and plot for exact placement on stage and house circuiting.

ELECTRICS 1-4

12 - ETC Source Four Par WFL (575w)
5 - ETC Source Four 26° Leko Specials (575w)
6 - ETC Source Four 36° Leko Pipe Ends (575w)
6 - Elation SixPar 300 LED Par
6 - Chauvet Rogue R2X Wash Moving Light

ELECTRIC 5

6 - Chroma-Q Color Force II 72 LED RGBA Strips
6 - Chroma - Q Color Force 72 LED RGBA Strips
available for the floor as well.

MOVING LIGHTS

8 - Martin MAC Quantum Profile Moving Lights (2 on front truss, 6 on line set 27)
8 - Martin MAC Quantum Wash Moving Lights (2 on front truss, 6 on line set 27)
24 - Chauvet Rogue R2X Wash Moving Light distributed 6 per overhead electric (LX 1-4)
12 - Chauvet Rogue R2X Wash Moving Lights for use as a floor package.

FOLLOW SPOTS

4 - Lycian 1275 Superstar 1.2
The throw from the spot booth to the lip is approximately 110'-0"

DANCE BOOMS

8 - 8' Rolling Truss Frames with 6 - ETC Source Four 36° Lekos.
Booms are pre-wired and stored in the crossover hallway upstage.

ATMOSPHERIC EFFECTS

1 - Reel F/X DF-50 Hazer, 1 - Radiance Hazer w/ Fan

HOUSE LIGHTS

House Light control is located in the FOH production area, spot booth and Stage Managers stand.
DMX control of house lights is NOT available.

HOUSE VIDEO PROJECTION EQUIPMENT

MPAC has 2 matching projectors. One lives permanently in the FOH projection booth. The other is a "floater" and can be configured in several different ways utilizing both front and rear projection.

2 - Christie M-Series 14K HD Projectors
1 - Analog Way Pulse2 Video Switcher
1 - Analog Way Smart Vu SVU-300 Video Switcher
1 - Da-Lite 25' x 14.5' Front Projection Screen
1 - Da-Lite 16'x 9' Dual Vision Front & Rear Projection Screen
1 - Blackmagic HyperDeck Studio 2
1 - Oppo BDP-103 Blu-Ray Player

STAGE DECK RISERS

16 - 4'-0" X 8'-0" Stage Deck
4 - 4'-0" x 6'-0" Stage Deck
4 - 4'-0" x 4'-0" Stage Deck
Assorted legs available in the following heights: 6", 8", 12", 16", 24", 32"
Rolling legs available (please advance)

MARLEY DANCE FLOOR

6 - 59" X 40'-0" Panels of black Harlequin dance floor.

PIPE AND DRAPE

Pipe and Drape available in 12'-0", 8'-0" and 3'-0" heights.

ORCHESTRAL EQUIPMENT

PIANOS

1 - Steinway Model D 9' Concert Grand Piano

1 - Steinway Model O 6' Baby Grand Piano

ALL TUNINGS must be approved and scheduled by the Production office.

CHAIRS, STOOLS, MUSIC STANDS & CONDUCTOR'S PODIUM

80 - Black Wenger Pro Orchestra Chairs

8 - 30" Black Wooden Stools

80 - Manhassat Music Stands

40 - Manhassat Music Stand Lights

40 - Battery Operated Music Stand Lights

1 - 4'-0" x 4'-0" x 12" High Conductor's Podium

ORCHESTRA SHELL

Wenger custom built 3 tier orchestra cloud system (clouds only, NO towers)

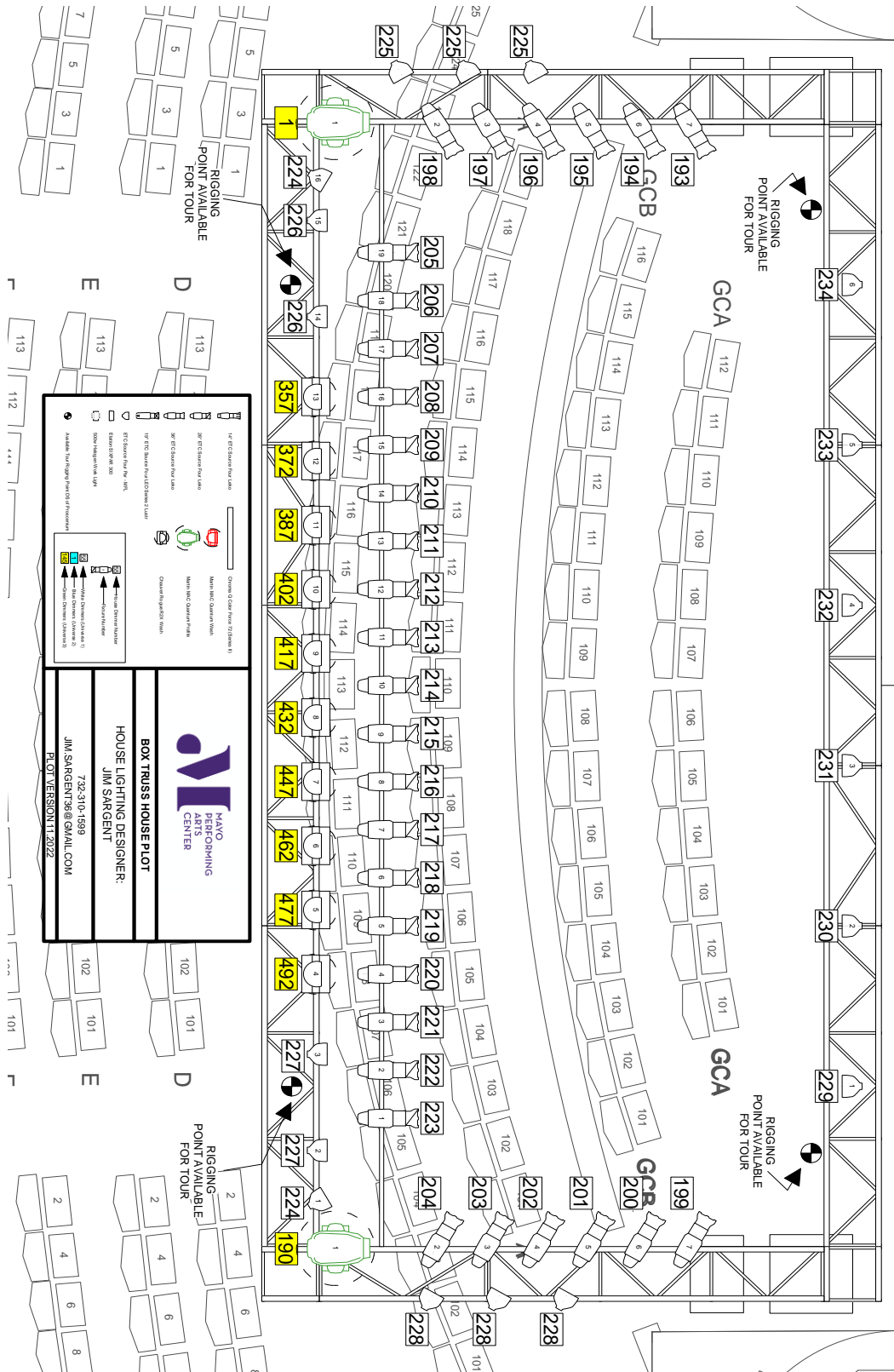
STAGE THRUST AND EXTENSIONS

Thrust covers first 2 rows of seating. The extensions add an additional 8' to the thrust and cover an additional 2 rows of seating.

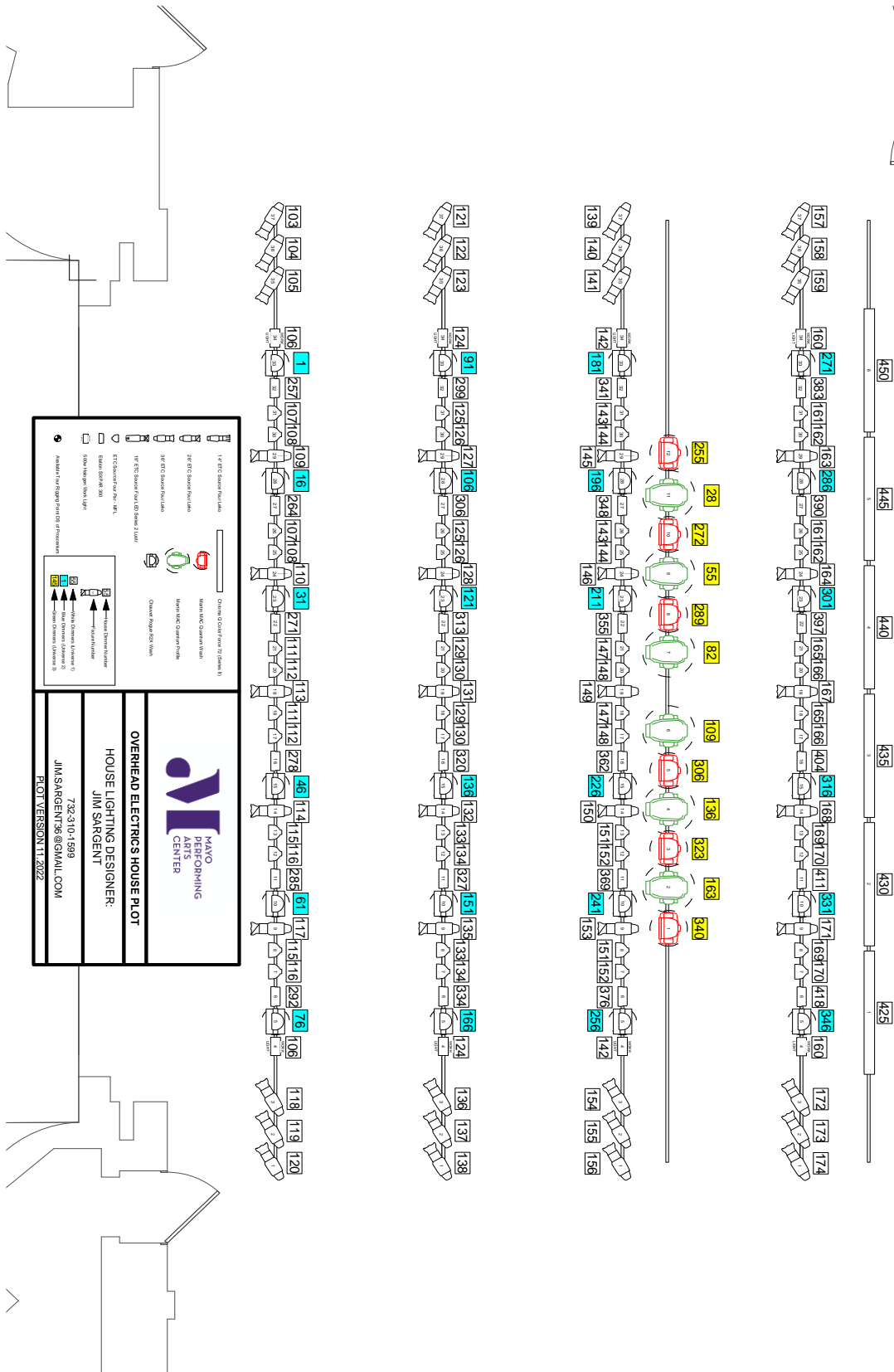
LINE SET SCHEDULE

<u>LINE#</u>	<u>DISTANCE</u>	<u>HOUSE</u>	<u>SHOW</u>	<u>TRIM</u>	<u>WEIGHT</u>	<u>BATTEN</u>	<u>NOTES</u>
				<u>HEIGHT</u>		<u>LENGTH</u>	
PL	0'-0"	Proscenium	PROSCENIUM	N/A	N/A	N/A	25'-2"H x 36'-0"W
FC	1'-4"	Fire Curtain	FIRE CURTAIN	N/A	N/A	40'-0"	PERMANENT
1	1'-10"	Large Proj. Screen	LARGE PROJ. SCREEN	Variable	120 LBS.	44'-0"	PERMANENT
2	2'-4"	Main Drape	MAIN DRAPE	Variable	780 LBS.	44'-0"	PERMANENT
3	3'-4"	Border/Legs 1		30'	120 LBS.	44'-0"	REMOVABLE
4	3'-10"					44'-0"	OPEN
5	4'-4"					44'-0"	OPEN
6	4'-10"	Electric 1	HOUSE LX 1	25'	600 LBS.	44'-0"	PERMANENT
7	5'-10"	Orchestra Cloud 1	ORCH. CLOUD 1	Variable	1860 LBS.	44'-0"	PERMANENT
8	6'-10"					44'-0"	OPEN
9	7'-4"					44'-0"	OPEN
10	8'-4"					44'-0"	OPEN
11	9'-4"					44'-0"	OPEN
12	10'-4"	Border 2		30'	60 LBS.	44'-0"	REMOVABLE
13	10'-10"	Legs 2		30'	90 LBS.	44'-0"	REMOVABLE
14	11'-4"					44'-0"	OPEN
15	11'-10"					44'-0"	OPEN
16	12'-4"	Electric 2	HOUSE LX 2	25'	600 LBS.	44'-0"	PERMANENT
17	12'-10"					44'-0"	OPEN
18	13'-4"					44'-0"	OPEN
19	14'-4"	Midstage Traveler	MIDSTAGE TRAV.	30'	420 LBS.	44'-0"	PERMANENT
20	15'-4"	Orchestra Cloud 2	ORCH. CLOUD 2	Variable	1710 LBS.	44'-0"	PERMANENT
21	16'-4"					44'-0"	OPEN
22	16'-10"	Border 3		30'	60 LBS.	44'-0"	REMOVABLE
23	17'-4"	Legs 3		30'	90 LBS.	44'-0"	REMOVABLE
24	19'-4"					44'-0"	OPEN
25	20'-4"	Electric 3	HOUSE LX 3	25'	600 LBS.	44'-0"	PERMANENT
26	21'-4"					44'-0"	OPEN
27	22'-4"	Moving Lights	HOUSE ML PIPE	25'		44'-0"	PERMANENT
28	23'-4"	Border 4		30'	60 LBS.	44'-0"	REMOVABLE
29	23'-10"	Legs 4		30'	90 LBS.	44'-0"	REMOVABLE
30	24'-10"	Orchestra Cloud 3	ORCH. CLOUD 3		1590 LBS.	44'-0"	PERMANENT
31	25'-10"						OPEN
32	26'-4"	Full Stage Black (FLAT)		30'	210 LBS.	44'-0"	REMOVABLE
33	27'-4"	Lighting Storage	LX STORAGE	GRID		44'-0"	PERMANENT
34	28'-4"						OPEN
35	29'-4"	Electric 4	HOUSE LX 4	25'	600 LBS.	44'-0"	PERMANENT
36	30'-4"	Border 5		30'	60 LBS.	44'-0"	REMOVABLE
37	30'-10"	Legs 5		30'	90 LBS.	44'-0"	REMOVABLE
38	31'-4"	Black Scrim		30'	45 LBS.	44'-0"	REMOVABLE
39	32'-4"	Electric 5	HOUSE LX 5	25'	360 LBS.	44'-0"	PERMANENT
40	33'-4"					44'-0"	OPEN
41	34'-4"	White Cyc		30'	75 LBS.	44'-0"	REMOVABLE
42	34'-10"					44'-0"	OPEN
43	35'-4"	Full Stage Black (FULLNESS)		30'	210 LBS.	44'-0"	REMOVABLE
	35'-10"	Back Wall	BACK WALL			44'-0"	PERMANENT

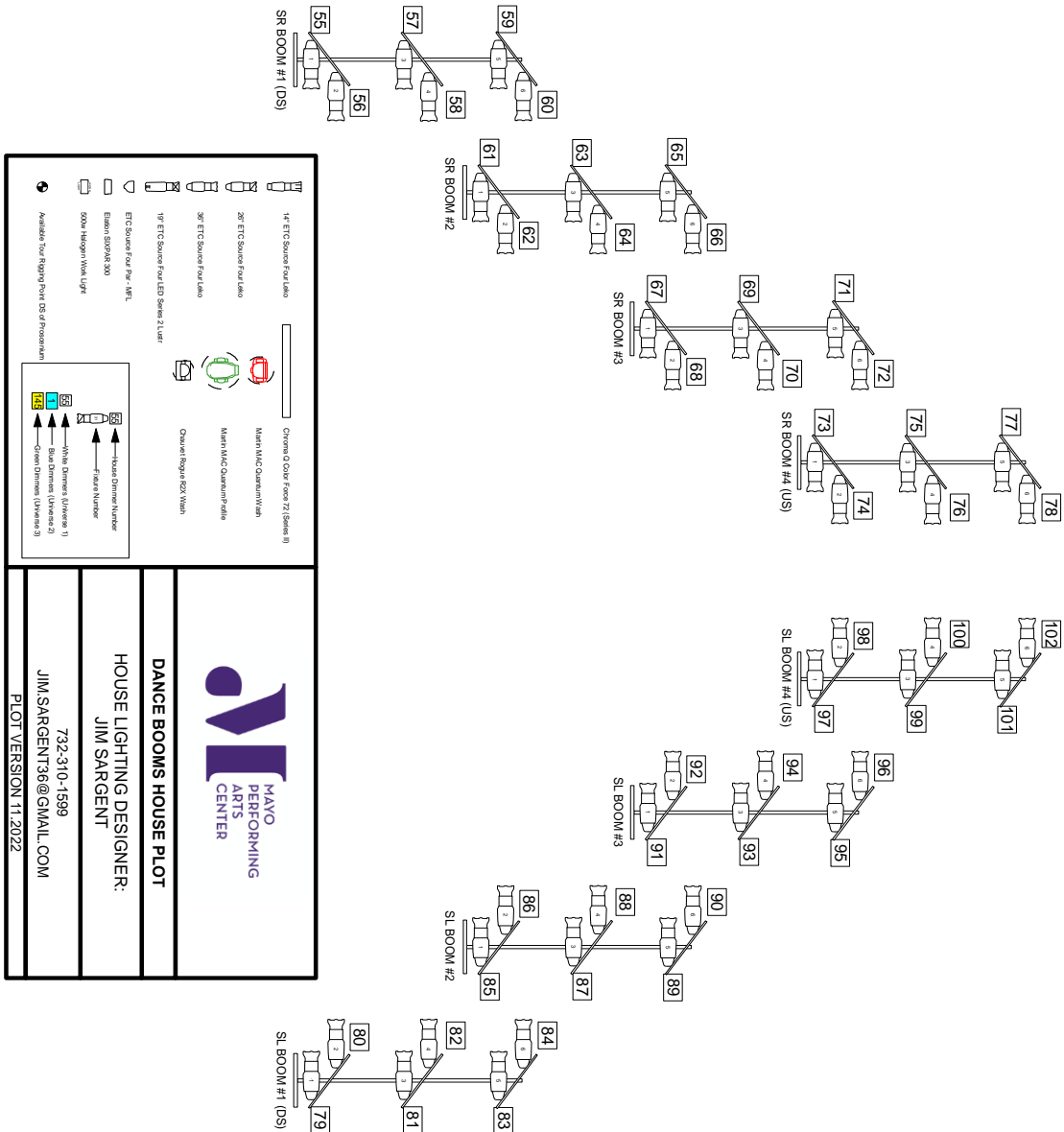
BOX TRUSS LIGHTING PLOT



OVERHEAD STAGE LIGHTING PLOT



DANCE BOOMS LIGHTING PLOT



FOH LIGHTING PLOT

